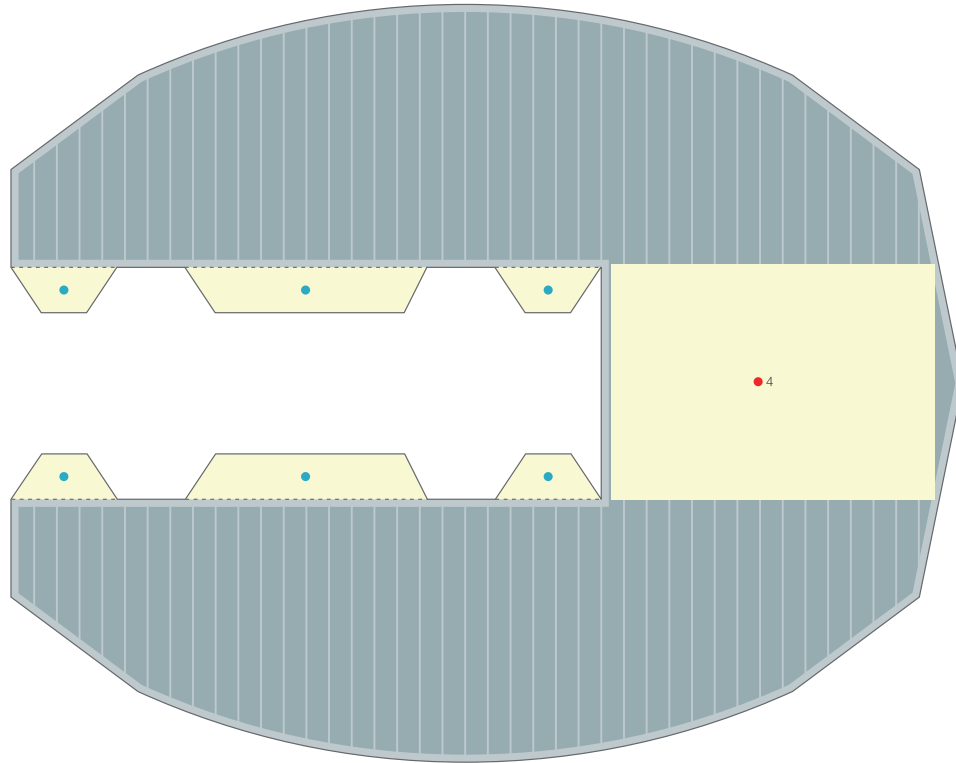


1 Ceiling of elliptical cylinder dome



2

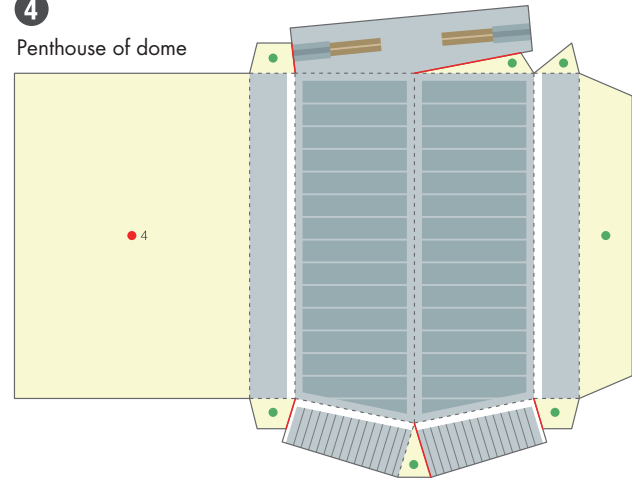


3



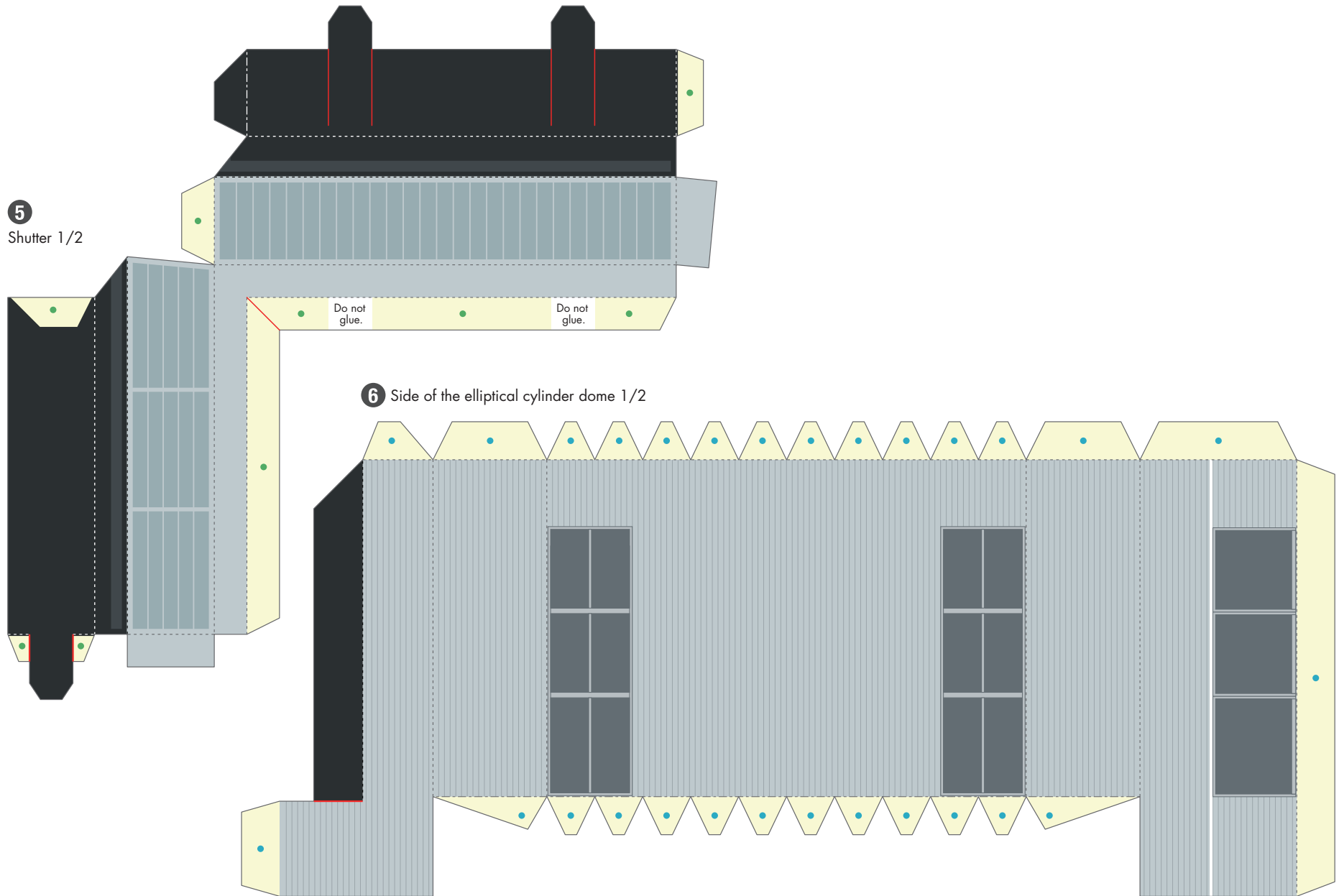
4

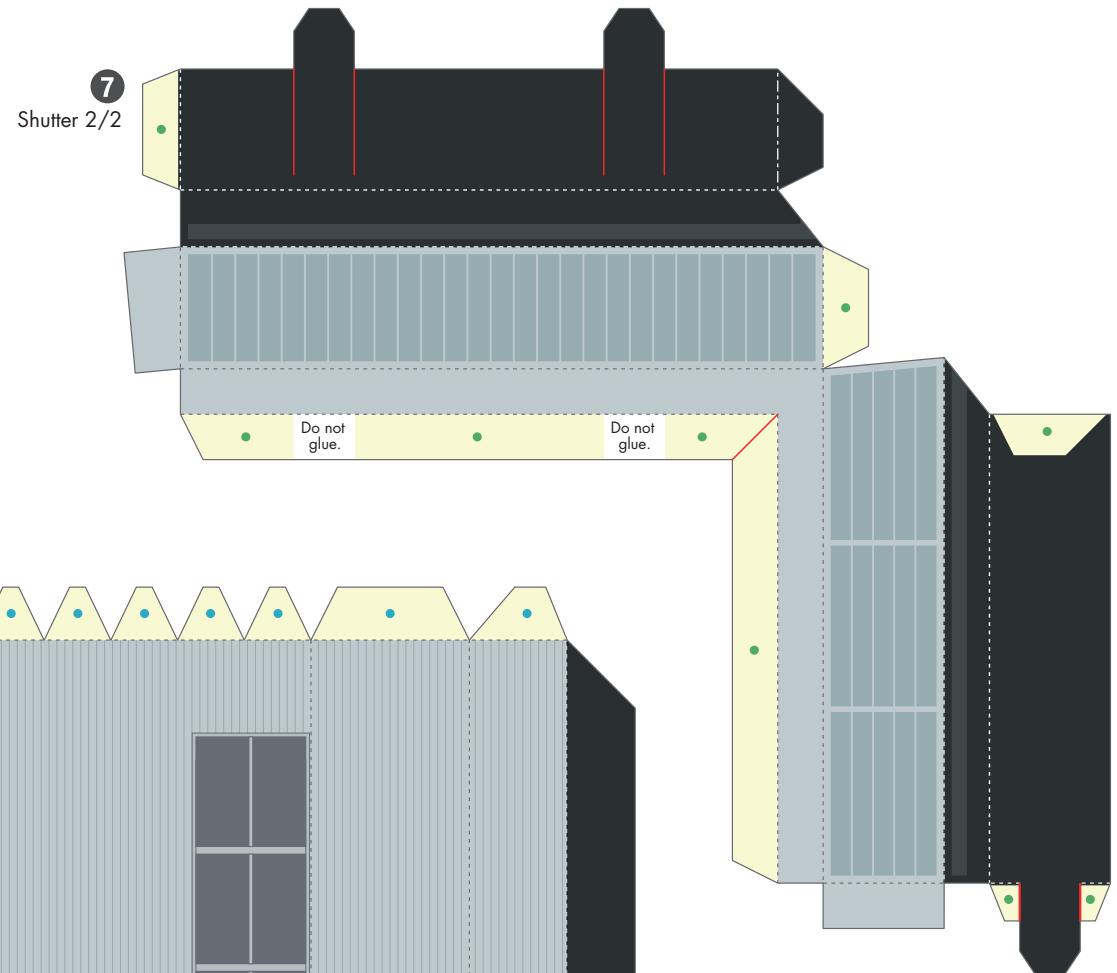
Penthouse of dome



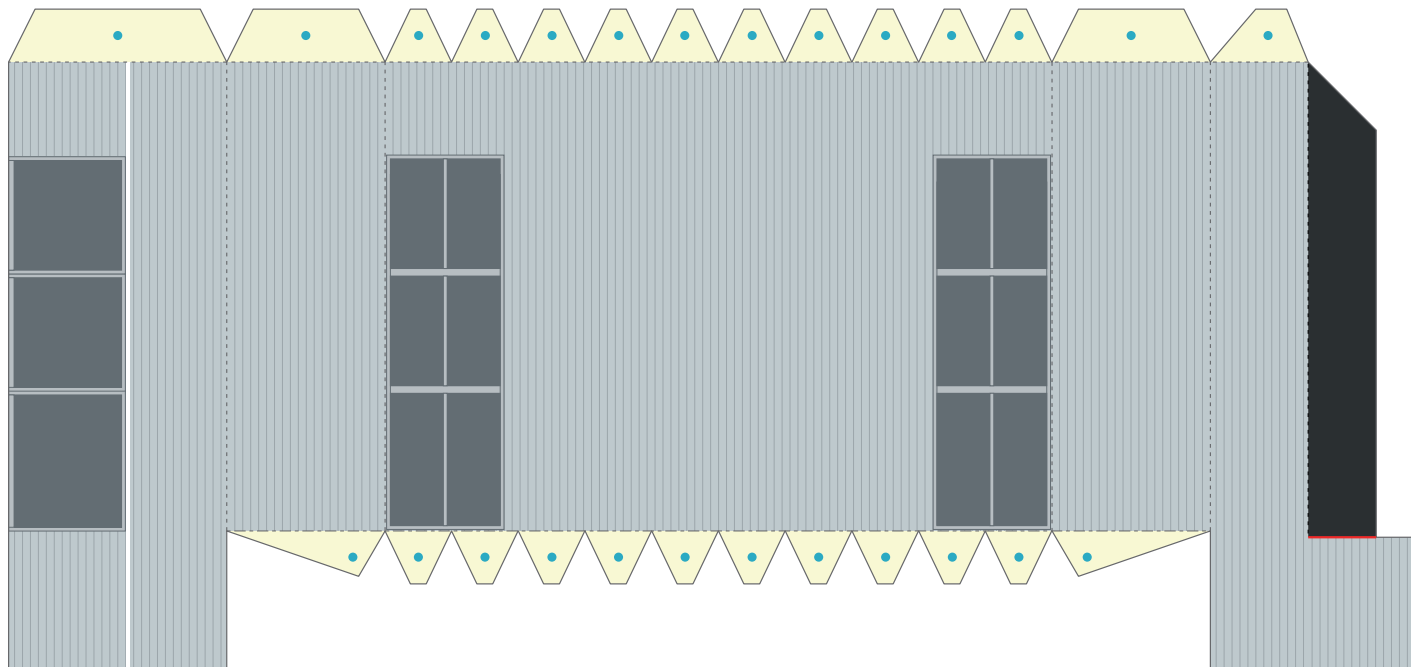
60

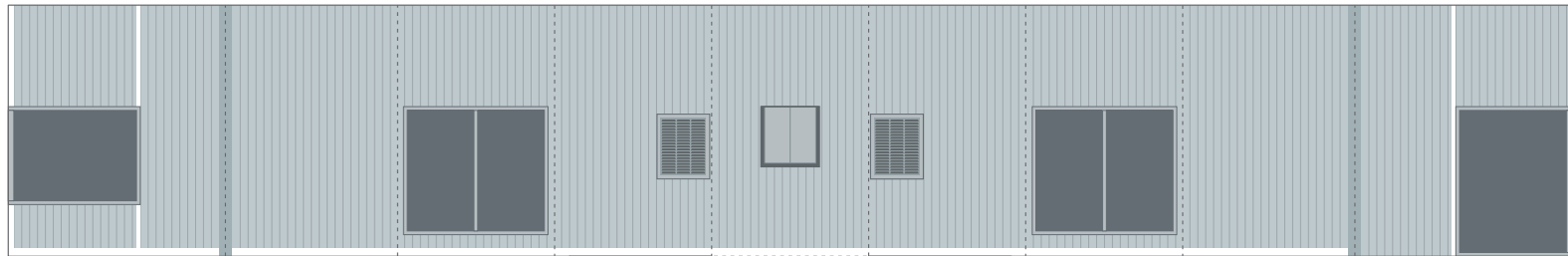






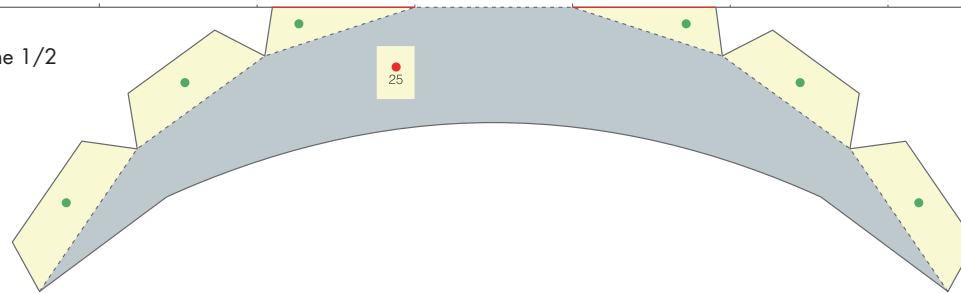
8 Side of the elliptical cylinder dome 2/2





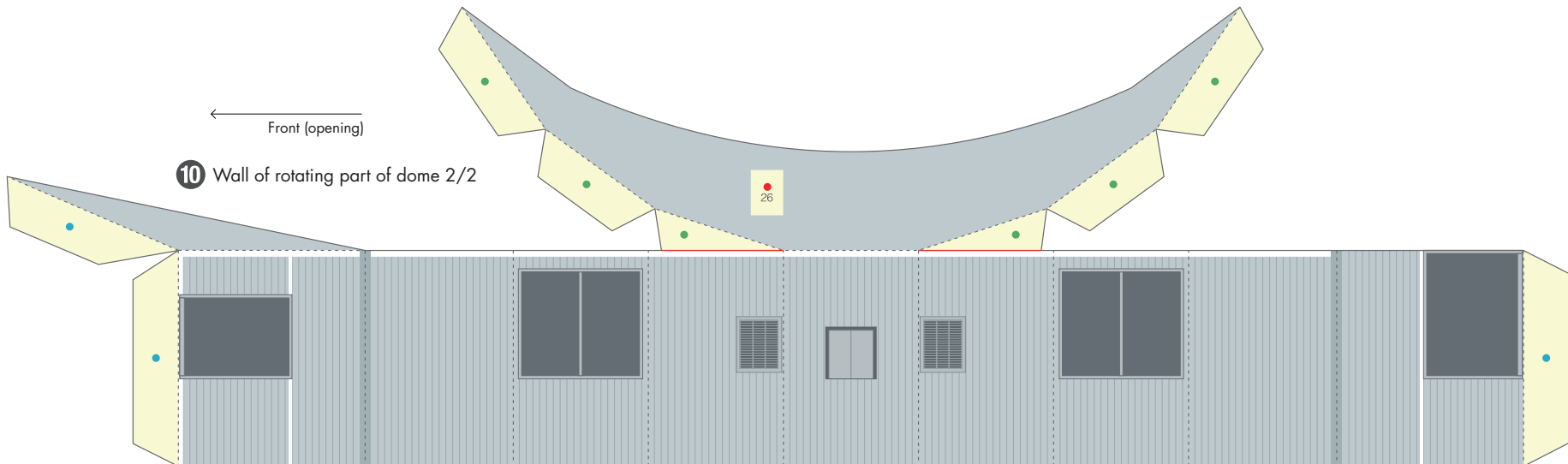
9 Wall of rotating part of dome 1/2

← Front (opening)



← Front (opening)

10 Wall of rotating part of dome 2/2



Subaru Telescope: Pattern

11 Wall of ventilation floor of the dome 1/2



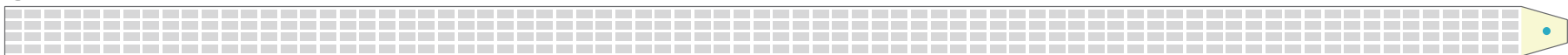
12 Wall of ventilation floor of the dome 2/2



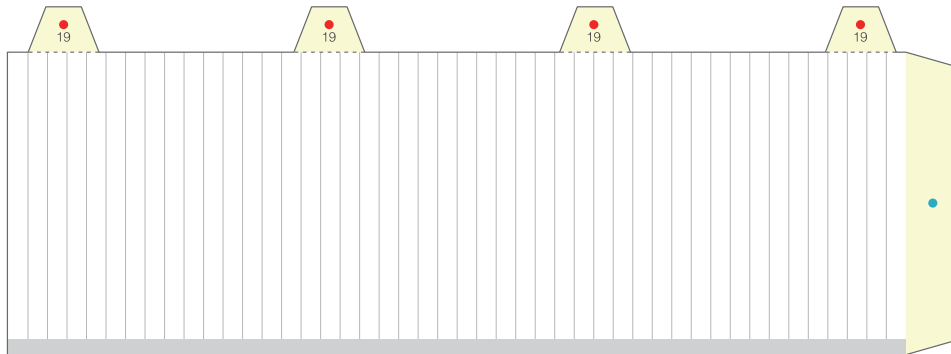
13 Catwalk fence 1/2



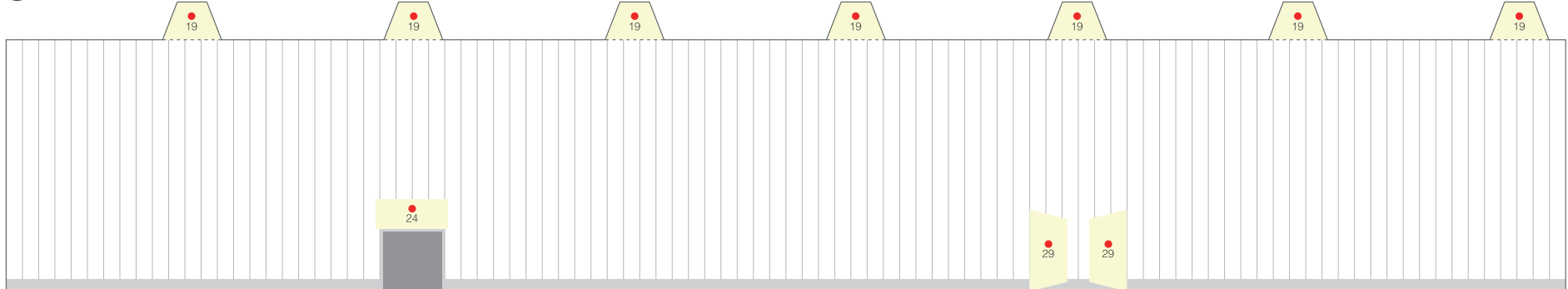
14 Catwalk fence 2/2



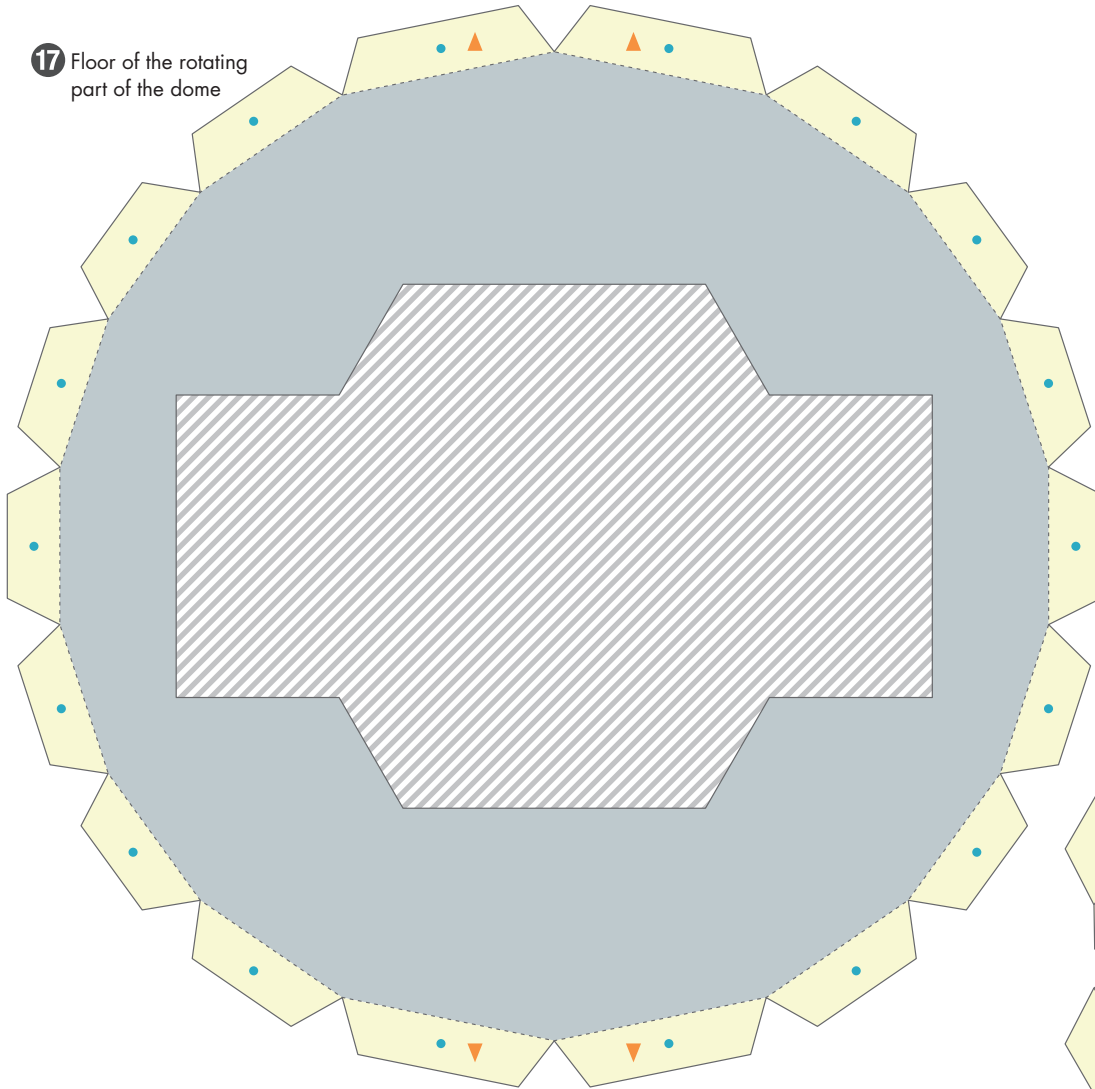
15 Wall of the lower part of the dome 1/2



16 Wall of the lower part of the dome 2/2



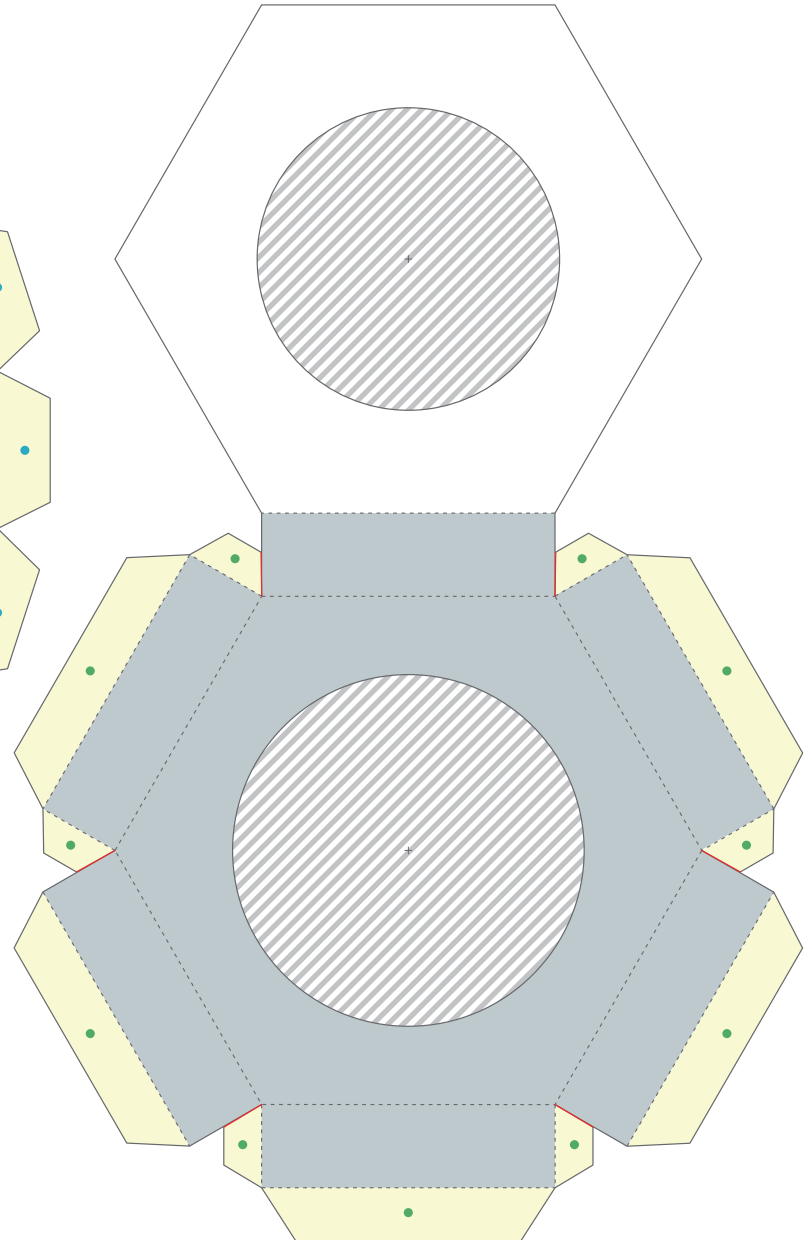
17 Floor of the rotating part of the dome



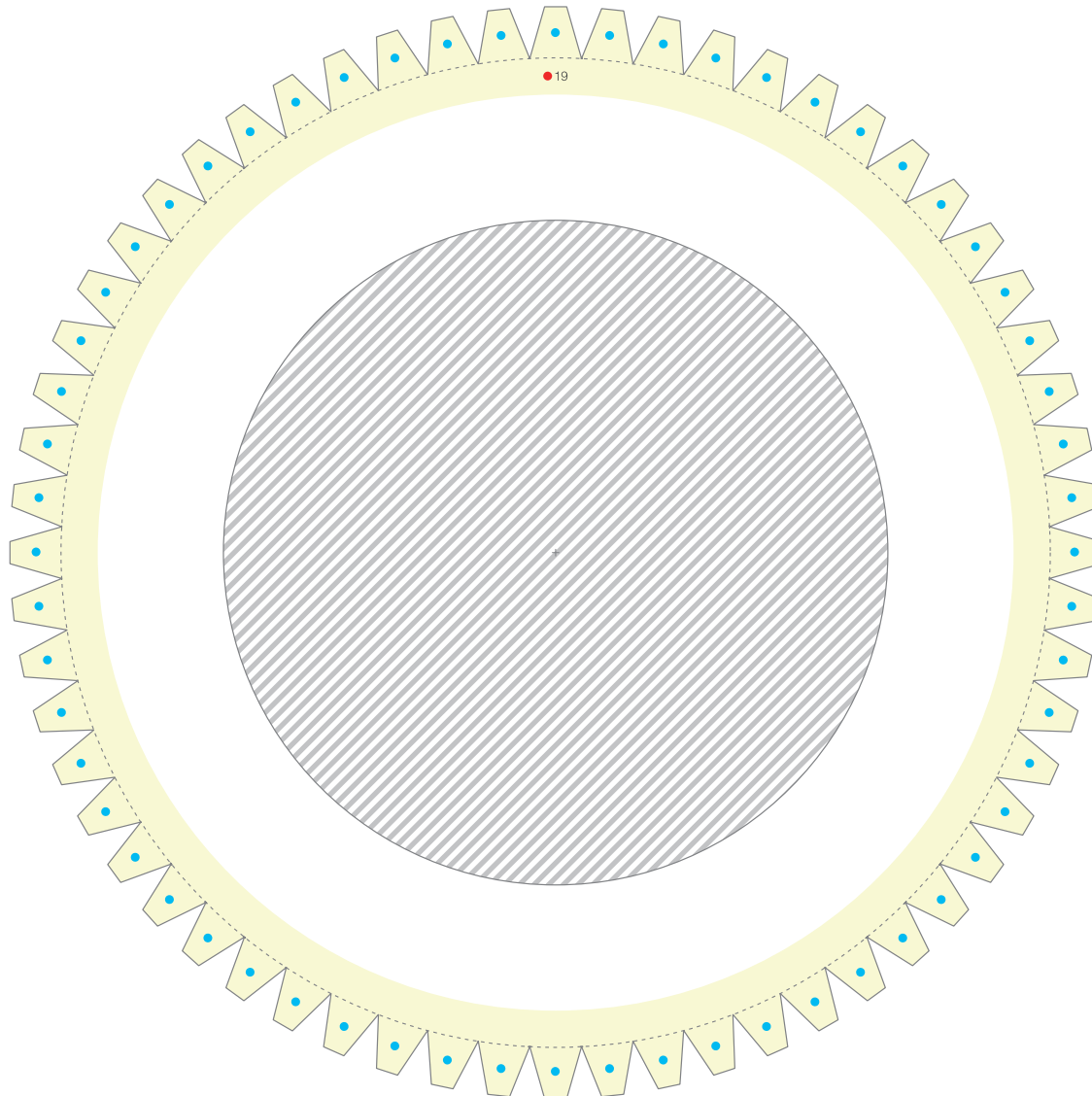
Flaps to which glue is to be applied marked with ▼ & ▼ face the front side and backside.



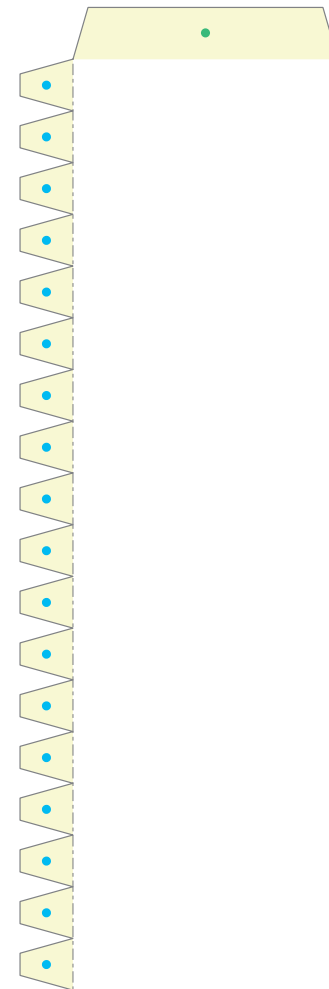
18 Setting part for the telescope (Not part of the actual Subaru)



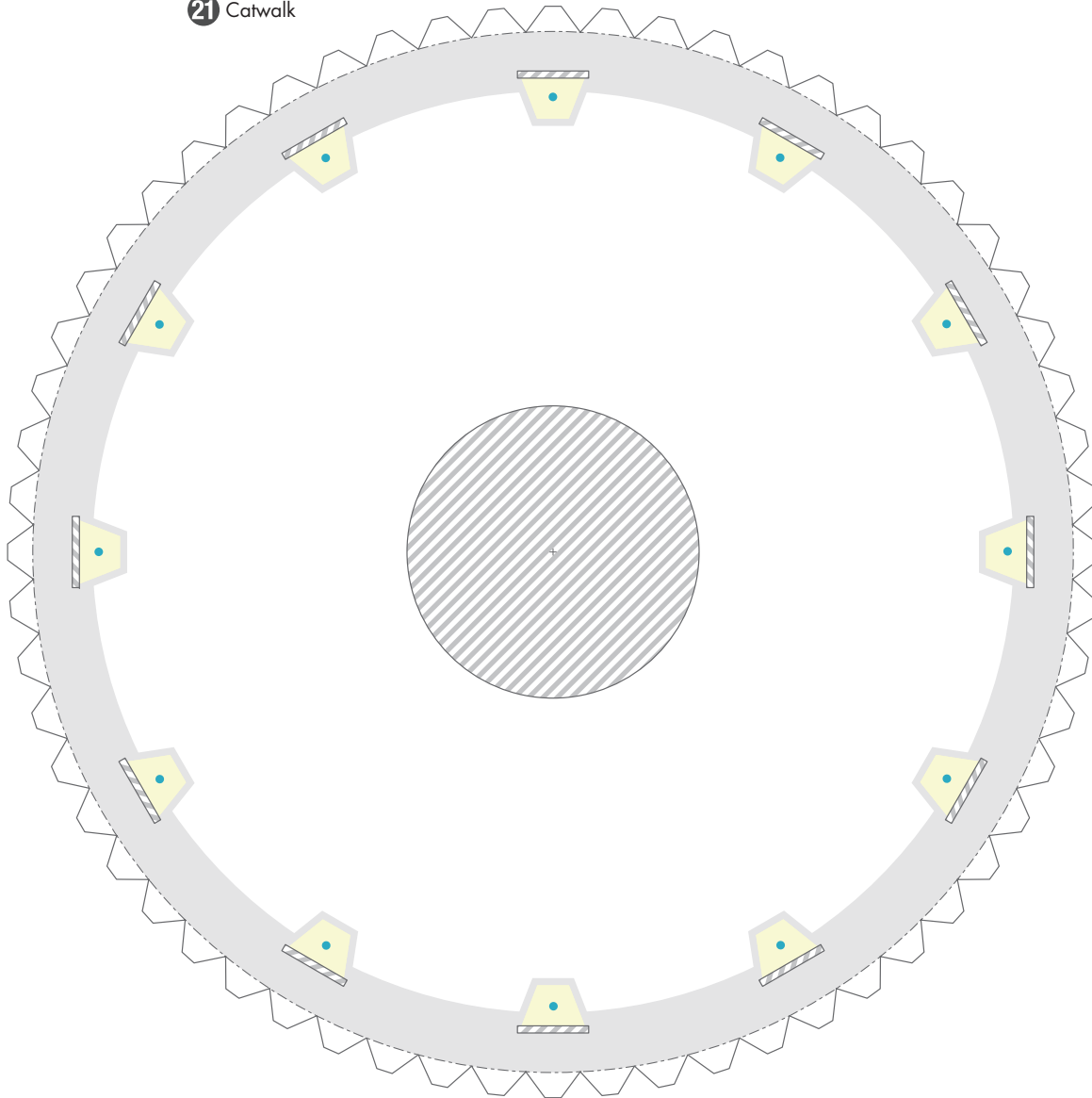
19 Floor of the ventilation floor of the dome



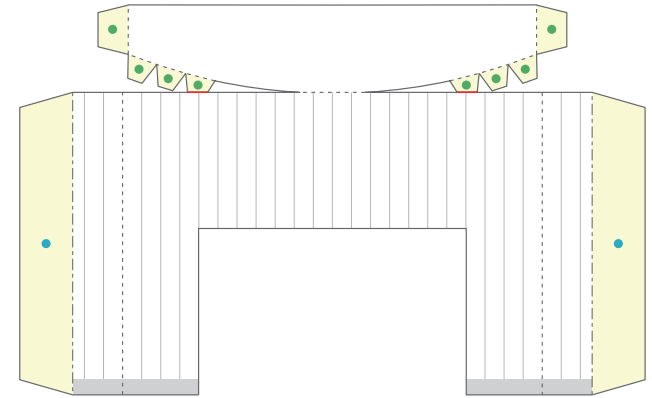
20 Setting part for the telescope
(Not part of the actual Subaru)



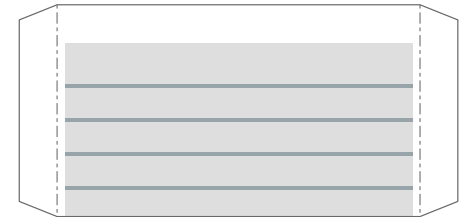
21 Catwalk



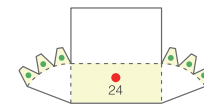
22 Large carry-in entrance



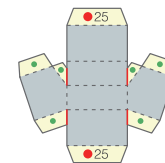
23 Shutter for large carry-in entrance



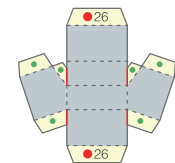
24 Roof for small carry-in entrance



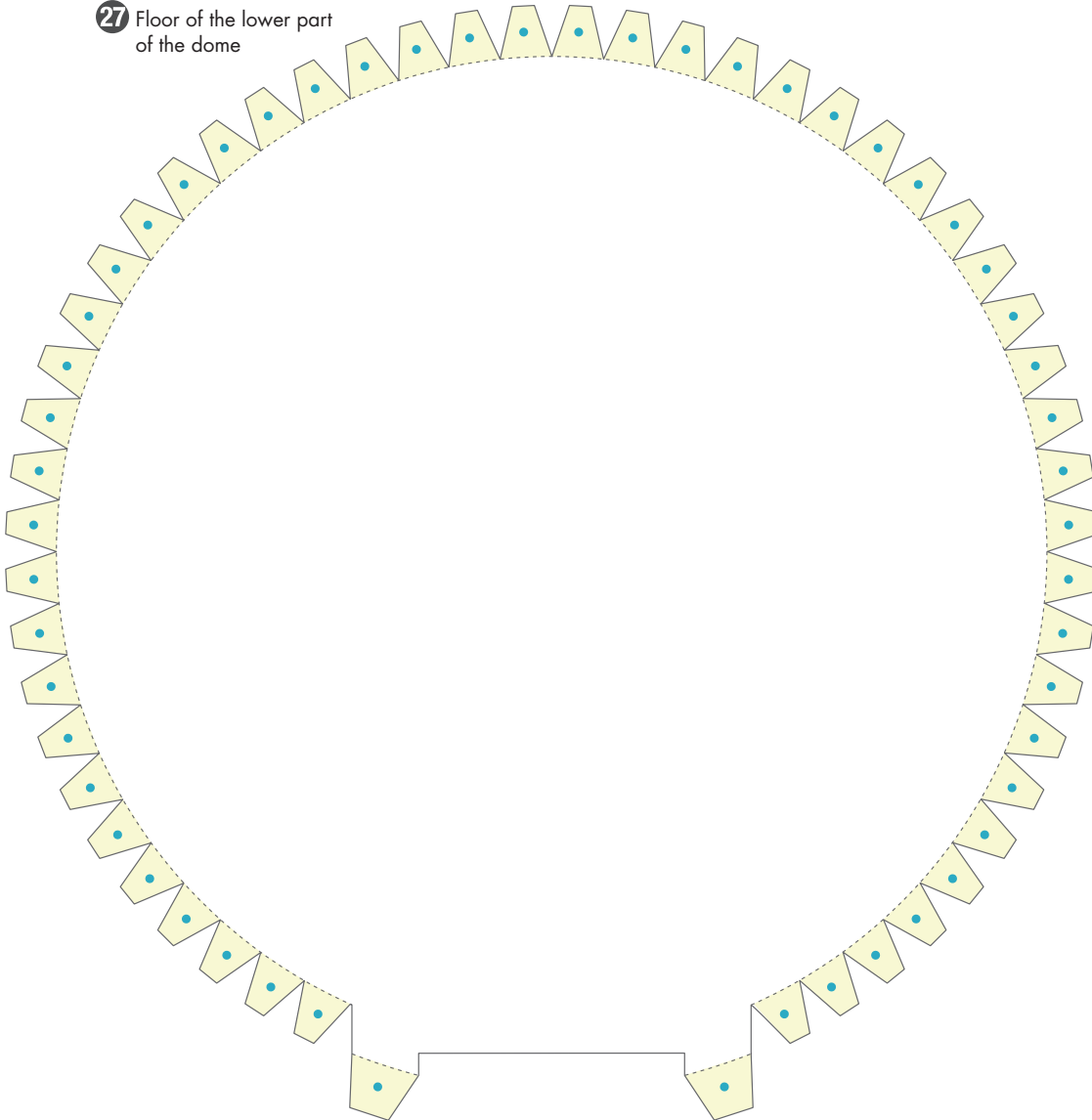
25 Hatch for shoulder of dome



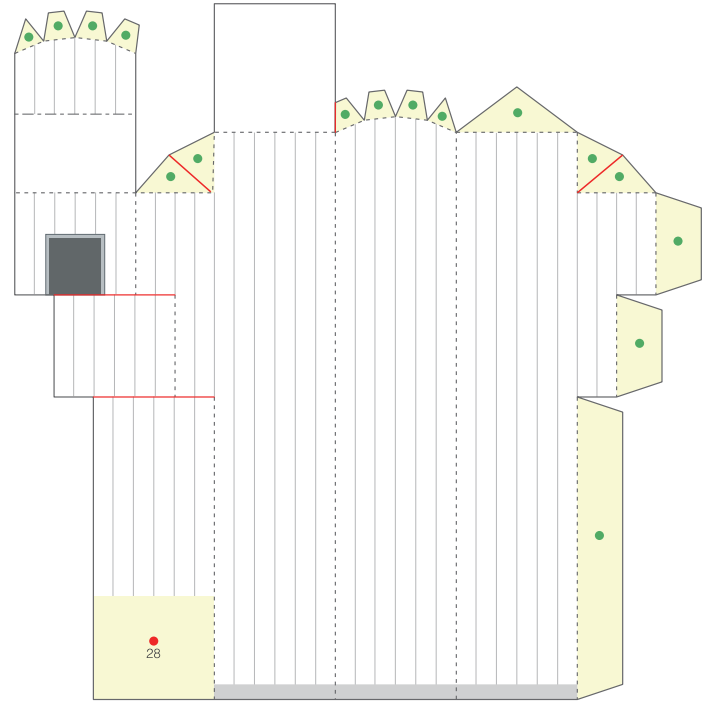
26 Hatch for shoulder of dome



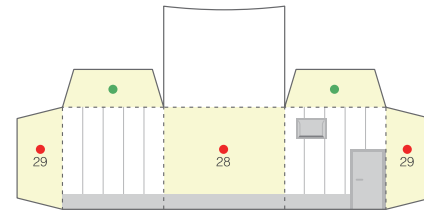
27 Floor of the lower part of the dome



28 External elevator tower



29 First-level entrance for the elevator tower



Subaru Telescope: Pattern

Canon® is a registered trademark of Canon Inc. © Canon Inc. © Keisuke Saka



30 Top ring 1/2

31 Top ring 2/2

32 Secondary mirror 1/2

33 Secondary mirror 2/2

34 Tube top spider

35 Tube top spider

36 Truss and center sections

37

38

39

40

41

42

43

44

45

46

Trusses for Nasmyth (**39** - **46**)

47 Primary mirror cell 1/2

48 Primary mirror cell 2/2

49 Primary mirror

50 Motor for rotation around the altitude axis.

51 Motor for rotation around the altitude axis.

52 Tertiary mirror unit

53 Cassegrain focus 1/2

54 Cassegrain focus 2/2

55 Nasmyth mount

56 Nasmyth mount

57 Device for Nasmyth mount

58 Horizontal rotating mount 1/2
(The structure differs from that of the actual Subaru telescope.)

59 Horizontal rotating mount 2/2
(The structure differs from that of the actual Subaru telescope.)